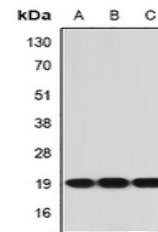


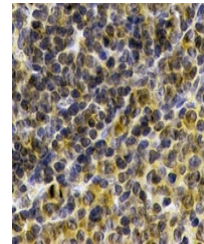
Product Datasheet

IL21 antibody (orb378131)

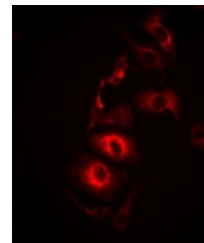
| | |
|----------------------------|---|
| Description | Rabbit polyclonal antibody to IL21. |
| Species/Host | Rabbit |
| Reactivity | Human, Mouse, Rat |
| Conjugation | Unconjugated |
| Tested Applications | IF, IH, WB |
| Immunogen | Recombinant full length protein of human IL-21 |
| Target | IL21 |
| Preservatives | Liquid in 0.42% Potassium phosphate, 0.87% Sodium chloride, pH 7.3, 30% glycerol, and 0.01% sodium azide. |
| Form/Appearance | Liquid in 0.42% Potassium phosphate, 0.87% Sodium chloride, pH 7.3, 30% glycerol, and 0.01% sodium azide. |
| Storage | Maintain refrigerated at 2-8°C for up to 2 weeks. For long term storage store at -20°C in small aliquots to prevent freeze-thaw cycles. |
| Note | For research use only |
| Clonality | Polyclonal |
| Source | Rabbit |
| Uniprot ID | A3QPB9 , Q9HBE4 |
| Entrez | 59067 , 365769 |
| Dilution Range | WB: 1:500-2000, IHC-P: 1:50-200, IF/ICC: 1:50-200 |
| Expiration Date | 12 months from date of receipt. |



Western blot analysis of IL-21 expressio...



Immunohistochemical analysis of IL-21 st...



Immunofluorescent analysis of IL-21 stai...