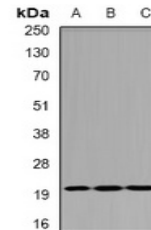


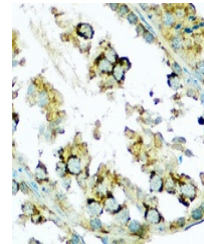
Product Datasheet

DIABLO antibody (orb378031)

Description	Rabbit polyclonal antibody to DIABLO.
Species/Host	Rabbit
Reactivity	Human, Mouse, Rat
Conjugation	Unconjugated
Tested Applications	IH, WB
Immunogen	Recombinant full length protein of human SMAC
Target	DIABLO
Preservatives	Liquid in 0.42% Potassium phosphate, 0.87% Sodium chloride, pH 7.3, 30% glycerol, and 0.01% sodium azide.
Form/Appearance	Liquid in 0.42% Potassium phosphate, 0.87% Sodium chloride, pH 7.3, 30% glycerol, and 0.01% sodium azide.
Storage	Maintain refrigerated at 2-8°C for up to 2 weeks. For long term storage store at -20°C in small aliquots to prevent freeze-thaw cycles.
Note	For research use only
Clonality	Polyclonal
Source	Rabbit
Uniprot ID	Q9NR28 , Q9JIQ3
Entrez	56616 , 66593
Dilution Range	WB: 1:500-2000, IF/ICC: 1:50-200
Expiration Date	12 months from date of receipt.



Western blot analysis of SMAC expression...



Immunohistochemical analysis of SMAC staining...