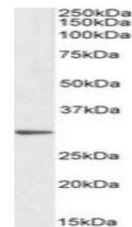


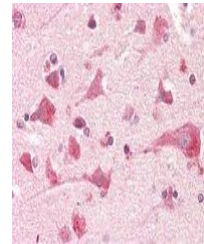
Product Datasheet

Prostaglandin E synthase 2 antibody (orb377872)

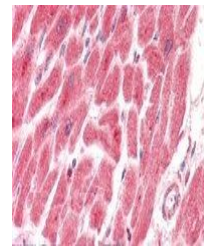
Description	Goat polyclonal antibody to Prostaglandin E synthase 2.
Species/Host	Goat
Reactivity	Human
Conjugation	Unconjugated
Tested Applications	ELISA, IHC, WB
Target	PTGES2 (aa292-306)
Preservatives	Supplied at 0.5 mg/ml in Tris saline, 0.02% sodium azide, pH 7.3 with 0.5% bovine serum albumin. Aliquot and store at -20°C. Minimize freezing and thawing.
Storage	Aliquot and store at -20°C. Minimize freezing and thawing.
Note	For research use only
Application notes	WB: Approx 30kDa band observed in lysates of cell line HeLa (calculated MW of 41.9kDa according to NP_079348.1).
Protein Sequence	RLKSRHRLQDNVRED
Clonality	Polyclonal
MW	41.9; 21.3
Entrez	80142
Dilution Range	ELISA: 1:128000, WB: 1-3 µg/ml, IHC-P: 5 µg/ml
Expiration Date	12 months from date of receipt.



Western blot analysis of HeLa lysate usi...



Immunohistochemical staining of Human Co...



Immunohistochemical staining of Human He...