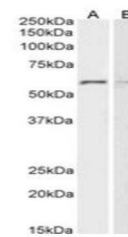


Product Datasheet

GPC1 antibody (orb377871)

Description	Goat polyclonal antibody to GPC1.
Species/Host	Goat
Reactivity	Human
Conjugation	Unconjugated
Tested Applications	ELISA, WB
Target	Glypican-1
Preservatives	Supplied at 0.5 mg/ml in Tris saline, 0.02% sodium azide, pH 7.3 with 0.5% bovine serum albumin. Aliquot and store at -20°C. Minimize freezing and thawing.
Storage	Aliquot and store at -20°C. Minimize freezing and thawing.
Note	For research use only
Application notes	WB: Approx 60kDa band observed in lysates of cell lines HeLa and K562 (calculated MW of 61.7kDa according to NP_002072.2). Recommended concentration: 1-3µg/ml.
Protein Sequence	TDKFWGTSGVES
Clonality	Polyclonal
MW	61.7
Entrez	2817
Dilution Range	ELISA: 1:16000, WB: 1-3 µg/ml
Expiration Date	12 months from date of receipt.



Western blot analysis of HeLa (Lane 1) a...