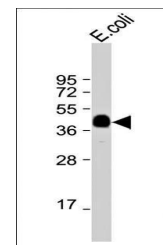
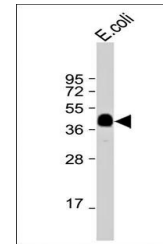


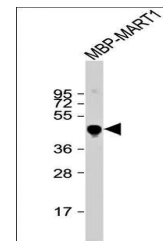
Product Datasheet

malE antibody (orb377829)

Description	Rabbit polyclonal antibody to malE.
Species/Host	Rabbit
Conjugation	Unconjugated
Tested Applications	WB
Immunogen	Synthesized Peptide
Target	malE
Form/Appearance	Purified polyclonal antibody supplied in PBS with 0.09% (W/V) sodium azide. This antibody is purified through a protein A column, followed by peptide affinity purification.
Storage	Maintain refrigerated at 2-8°C for up to 2 weeks. For long term storage store at -20°C in small aliquots to prevent freeze-thaw cycles
Note	For research use only
Isotype	Rabbit IgG
Clonality	Polyclonal
MW	43388
Uniprot ID	POAEX9
Dilution Range	WB: 1:2000, WB: 1:16000
Expiration Date	12 months from date of receipt.



Western blot analysis of E.coli lysate u...



Western blot analysis of Recombinant MBP...