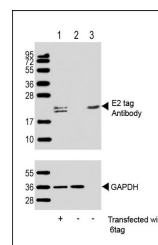
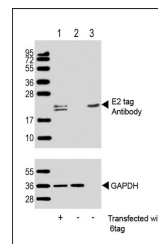


Product Datasheet

E2 tag antibody (orb377822)

Description	Rabbit polyclonal antibody to E2 tag.
Species/Host	Rabbit
Conjugation	Unconjugated
Tested Applications	WB
Immunogen	Synthesized Peptide
Target	This E2 tag antibody is generated from a rabbit immunized with a KLH conjugated synthetic peptide of E2 tag.
Form/Appearance	Purified polyclonal antibody supplied in PBS with 0.09% (W/V) sodium azide. This antibody is purified through a protein A column, followed by peptide affinity purification.
Storage	Maintain refrigerated at 2-8°C for up to 2 weeks. For long term storage store at -20°C in small aliquots to prevent freeze-thaw cycles
Note	For research use only
Isotype	Rabbit IgG
Clonality	Polyclonal
Uniprot ID	NA
Dilution Range	WB: 1:1000
Expiration Date	12 months from date of receipt.



Western blot analysis of 293T/17 transfection...