

## Product Datasheet

# Choline Acetyltransferase Antibody: Biotin (orb377495)

|                            |   |
|----------------------------|---|
| <b>Description</b>         | Rabbit polyclonal antibody against Choline O-acetyltransferase conjugated to Biotin.  |
| <b>Species/Host</b>        | Rabbit  |
| <b>Reactivity</b>          | Human, Mouse  |
| <b>Conjugation</b>         | Biotin  |
| <b>Tested Applications</b> | ELISA, ICC, IF, IHC, WB   |
| <b>Immunogen</b>           | Synthetic peptide from the N-terminal to the mid-protein of human Choline O-Acetyltrasferase  |
| <b>Target</b>              | Choline Acetyltransferase   |
| <b>Preservatives</b>       | 136.36mM Ethanolamine, and 9.55mM Sodium Bicarbonate in 95.45% PBS  |
| <b>Concentration</b>       | 1 mg/ml   |
| <b>Storage</b>             | Conjugated antibodies should be stored according to the product label   |
| <b>Note</b>                | For research use only   |
| <b>Application notes</b>   | A 1:1000 dilution of SPC-706 was sufficient for detection of Choline Acetyltransferase on mouse brain lysates using Goat anti-rabbit IgG:HRP as the secondary antibody. |
| <b>Clonality</b>           | Polyclonal  |
| <b>MW</b>                  | 82.5kDa   |
| <b>Uniprot ID</b>          | <b>P28329</b>   |
| <b>NCBI</b>                | <b>NP_001136401.1</b>   |

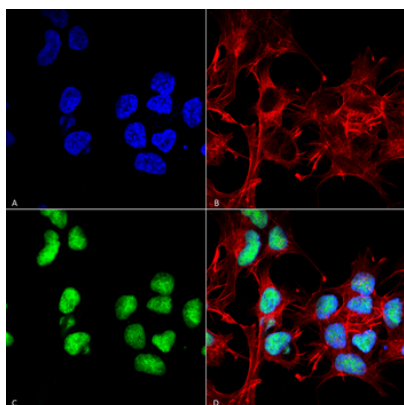
**Biorbyt Ltd.**

7 Signet Court, Swann's Road,  
Cambridge, CB5 8LA, United Kingdom  
Email: [info@biorbyt.com](mailto:info@biorbyt.com), [support@biorbyt.com](mailto:support@biorbyt.com)  
Phone: [+44 \(0\) 1223 859-353](tel:+44(0)1223859353) | Fax: [+1 \(415\) 651-8558](tel:+1(415)6518558)

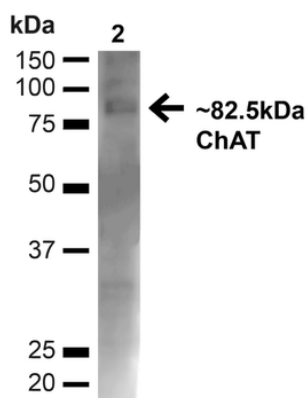
**Biorbyt LLC.**

68 TW Alexander Drive,  
Durham, NC, 27713, United States  
Email: [info@biorbyt.com](mailto:info@biorbyt.com), [support@biorbyt.com](mailto:support@biorbyt.com)  
Phone: [+1 \(415\) 906-5211](tel:+1(415)9065211) | Fax: [+1 \(415\) 651-8558](tel:+1(415)6518558)

|                        |                                 |
|------------------------|---------------------------------|
| <b>Entrez</b>          | <b>1103</b>                     |
| <b>Dilution Range</b>  | WB (1:1000); ICC/IF (1:100)     |
| <b>Expiration Date</b> | 12 months from date of receipt. |



Immunocytochemistry/Immunofluorescence analysis using Rabbit Anti-Choline Acetyltransferase Polyclonal Antibody. Tissue: Neuroblastoma cell line (SK-N-BE). Species: Human. Fixation: 4% Formaldehyde for 15 min at RT. Primary Antibody: Rabbit Anti-Choline Acetyltransferase Polyclonal Antibody at 1:100 for 60 min at RT. Secondary Antibody: Goat Anti-Rabbit ATTO 488 at 1:100 for 60 min at RT. Counterstain: Phalloidin Texas Red F-Actin stain; DAPI (blue) nuclear stain at 1:1000, 1:5000 for 60min RT, 5min RT. Localization: Nucleus. Magnification: 60X. (A) DAPI (blue) nuclear stain (B) Phalloidin Texas Red F-Actin stain (C) Choline Acetyltransferase Antibody (D) Composite.



Western blot analysis of Mouse Brain showing detection of ~82.5kDa Choline Acetyltransferase protein using Rabbit Anti-Choline Acetyltransferase Polyclonal Antibody. Lane 1: MW Ladder. Lane 2: Mouse Brain (20 µg). Load: 20 µg. Block: 5% milk + TBST for 1 hour at RT. Primary Antibody: Rabbit Anti-Choline Acetyltransferase Polyclonal Antibody at 1:1000 for 1 hour at RT. Secondary Antibody: Goat Anti-Rabbit: HRP at 1:2000 for 1 hour at RT. Color Development: TMB solution for 12 min at RT. Predicted/Observed Size: ~82.5kDa.

**Biorbyt Ltd.**

7 Signet Court, Swann's Road,  
Cambridge, CB5 8LA, United Kingdom  
Email: [info@biorbyt.com](mailto:info@biorbyt.com), [support@biorbyt.com](mailto:support@biorbyt.com)  
Phone: [+44 \(0\) 1223 859-353](tel:+44(0)1223859353) | Fax: [+1 \(415\) 651-8558](tel:+1(415)6518558)

**Biorbyt LLC.**

68 TW Alexander Drive,  
Durham, NC, 27713, United States  
Email: [info@biorbyt.com](mailto:info@biorbyt.com), [support@biorbyt.com](mailto:support@biorbyt.com)  
Phone: [+1 \(415\) 906-5211](tel:+1(415)9065211) | Fax: [+1 \(415\) 651-8558](tel:+1(415)6518558)