
Product Datasheet

**EpCAM Antibody / Extracellular domain
(orb376650)**

Description

EpCAM may act as a physical homophilic interaction


Species/Host

Mouse

Reactivity

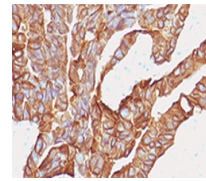
Human

Conjugation

Unconjugated

Tested Applications

IF, IHC-P, WB



IHC testing of human colorectal carcinom...

Immunogen

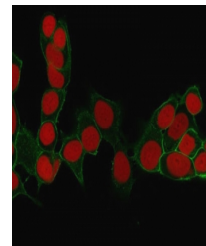
Human partial recombinant protein (extracellular portion) was used as the immunogen for this anti-EpCAM antibody.

Preservatives

0.2 mg/ml in 1X PBS with 0.1 mg/ml rAlbumin (US sourced) and 0.05% sodium azide

Storage

Store the anti-EpCAM antibody at 2-8°C (with azide) or aliquot and store at -20°C or colder (without azide).



Immunofluorescent staining of human MCF-...

Note

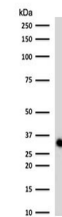
For research use only

Application notes

The concentration stated for each application is a general starting point. Variations in protocols, secondaries and substrates may require the anti-EpCAM antibody to be titered up or down for optimal performance.

Formula

0.2 mg/ml in 1X PBS with 0.1 mg/ml BSA (US sourced) and 0.05% sodium azide



Western blot testing of human HCT116 cel...

Isotype

Mouse IgG1, kappa

Clonality

Monoclonal

Purity

Protein G affinity chromatography

Uniprot ID

[P16422](#)

Hazard Information

This anti-EpCAM antibody is available for research use only.

Dilution Range

Western blot: 1-2ug/ml, Immunofluorescence: 1-2ug/ml, Immunohistochemistry (FFPE): 1-2ug/ml for 30 min at RT (1)

Expiration Date

12 months from date of receipt.