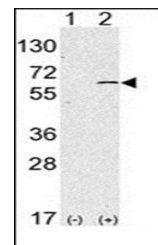
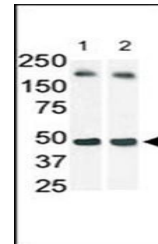


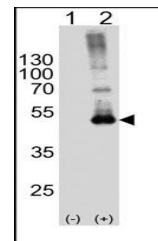
Product Datasheet

SPHK1 antibody (orb37630)

Description	Purified rabbit polyclonal antibody.
Species/Host	Rabbit
Reactivity	Human
Conjugation	Unconjugated
Tested Applications	WB
Immunogen	Synthetic Peptide
Target	SPHK1
Form/Appearance	Purified polyclonal antibody supplied in PBS with 0.09% (W/V) sodium azide. This antibody is prepared by Saturated Ammonium Sulfate (SAS) precipitation followed by dialysis against PBS.
Storage	Maintain refrigerated at 2-8°C for up to 2 weeks. For long term storage store at -20°C in small aliquots to prevent freeze-thaw cycles
Note	For research use only
Isotype	Rabbit IgG
Clonality	Polyclonal
MW	42518
Uniprot ID	Q9NYA1
NCBI	NP_068807.2 , NP_001136074.1 , NP_892010.2 , NP_001136073.1
Dilution Range	WB: 1:1000
Expiration Date	12 months from date of receipt.



Western blot analysis of in 293 cell lin...



Western blot analysis of SPHK1 antibody