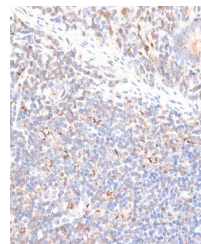


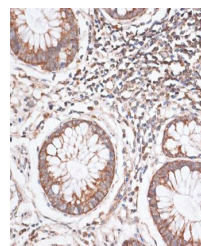
Product Datasheet

KIF14 antibody (orb374568)

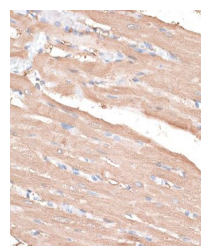
Description	Rabbit polyclonal antibody to KIF14
Reactivity	Human, Mouse, Rat
Conjugation	Unconjugated
Tested Applications	ICC, IF, IHC, WB
Immunogen	Recombinant fusion protein of human KIF14(NP_055690.1).
Preservatives	PBS with 0.02% sodium azide,50% glycerol,pH7.3.
Storage	Maintain refrigerated at 2-8°C for up to 2 weeks. For long term storage store at -20°C in small aliquots to prevent freeze-thaw cycles.
Note	For research use only
Isotype	IgG
Clonality	Polyclonal
MW	190kDa
Uniprot ID	Q15058
Dilution Range	WB: 1:1000-2000
Expiration Date	12 months from date of receipt.



Immunohistochemical staining of human ap...



Immunohistochemical staining of human co...



Immunohistochemical staining of rat hear...