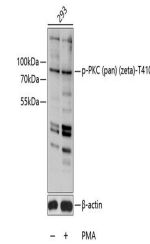


Product Datasheet

PKC (pan) (zeta) (Phospho-T410) antibody (orb374522)

Description	Rabbit polyclonal antibody to PKC (pan) (zeta) (Phospho-T410)
Reactivity	Human, Mouse, Rat
Conjugation	Unconjugated
Tested Applications	WB
Immunogen	A synthetic phosphorylated peptide around T410 of human PRKCZ(NP_002735.3).
Preservatives	PBS with 0.01% thiomersal, 50% glycerol, pH 7.3.
Storage	Maintain refrigerated at 2-8°C for up to 2 weeks. For long term storage store at -20°C in small aliquots to prevent freeze-thaw cycles.
Note	For research use only
Isotype	IgG
Clonality	Polyclonal
MW	85kDa
Uniprot ID	P05129, P17252, Q02156, Q05655, P24723, P05771, P41743, Q05513, Q04759
Dilution Range	WB: 1:500-2000
Expiration Date	12 months from date of receipt.



Western blot analysis of extracts of 293...