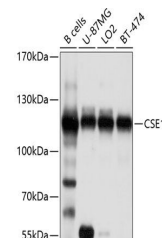


Product Datasheet

CSE1L antibody (orb374497)

Description	Rabbit polyclonal antibody to CSE1L
Reactivity	Human, Rat
Conjugation	Unconjugated
Tested Applications	IHC, WB
Immunogen	A synthetic peptide of human Exportin 2 (XPO2)(NP_001243064.1).
Preservatives	PBS with 0.02% sodium azide,50% glycerol,pH7.3.
Storage	Maintain refrigerated at 2-8°C for up to 2 weeks. For long term storage store at -20°C in small aliquots to prevent freeze-thaw cycles.
Note	For research use only
Isotype	IgG
Clonality	Polyclonal
MW	110kDa
Uniprot ID	P55060
Dilution Range	WB: 1:500-2000
Expiration Date	12 months from date of receipt.



Western blot analysis of extracts of var...