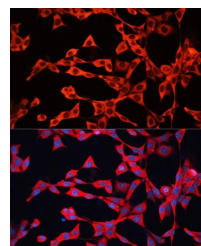


Product Datasheet

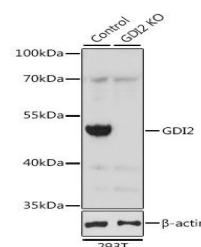
GDI2 antibody (orb374455)

Description	Rabbit polyclonal antibody to GDI2
Reactivity	Human, Mouse, Rat
Conjugation	Unconjugated
Tested Applications	ICC, IF, WB
Immunogen	Recombinant fusion protein of human GDI2(NP_001485.2).
Preservatives	PBS with 0.02% sodium azide,50% glycerol,pH7.3.
Storage	Maintain refrigerated at 2-8°C for up to 2 weeks. For long term storage store at -20°C in small aliquots to prevent freeze-thaw cycles.
Note	For research use only
Isotype	IgG
Clonality	Polyclonal
MW	51kDa
Uniprot ID	P50395
Dilution Range	WB: 1:200-3000
Expiration Date	12 months from date of receipt.

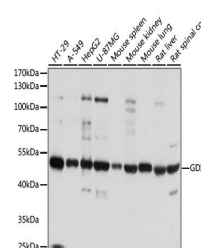


Immunofluorescence analysis of NIH/3T3

C...



Western blot analysis of extracts from n...



Western blot analysis of extracts of var...