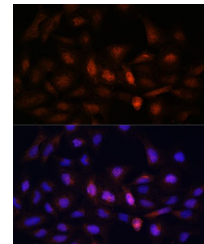


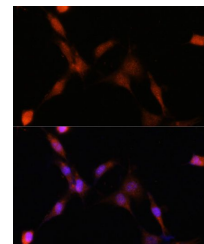
Product Datasheet

PSMA7 antibody (orb374375)

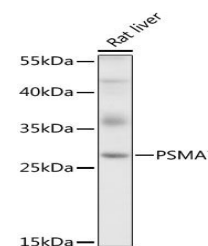
Description	Rabbit polyclonal antibody to PSMA7
Species/Host	Rabbit
Reactivity	Human, Mouse, Rat
Conjugation	Unconjugated
Tested Applications	ELISA, IF, IHC-P, WB
Immunogen	Recombinant fusion protein containing a sequence corresponding to amino acids 1-248 of human PSMA7 (NP_002783.1).
Preservatives	PBS with 0.02% sodium azide, 50% glycerol, pH 7.3.
Storage	Maintain refrigerated at 2-8°C for up to 2 weeks. For long term storage store at -20°C in small aliquots to prevent freeze-thaw cycles.
Note	For research use only
Isotype	IgG
Clonality	Polyclonal
MW	30kDa
Uniprot ID	O14818
Dilution Range	WB: 1:500-2000
Expiration Date	12 months from date of receipt.



Immunofluorescence analysis of U-2 OS ce...



Immunofluorescence analysis of NIH-3T3 C...



Western blot analysis of extracts of rat...