

## Product Datasheet

### GSK3A (Phospho-S21) antibody (orb374350)

**Description** Rabbit polyclonal antibody to GSK3A (Phospho-S21)

**Reactivity** Human

**Conjugation** Unconjugated

**Tested Applications** IP, WB

**Immunogen** A synthetic phosphorylated peptide around S21 of human GSK3 $\alpha$ (NP\_063937.2).

**Preservatives** PBS with 0.05% proclin300,50% glycerol,pH7.3.

**Storage** Maintain refrigerated at 2-8°C for up to 2 weeks. For long term storage store at -20°C in small aliquots to prevent freeze-thaw cycles.

**Note** For research use only

**Isotype** IgG

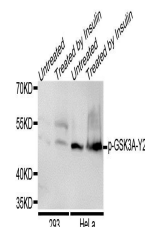
**Clonality** Polyclonal

**MW** 51kDa

**Uniprot ID** **P49840**

**Dilution Range** WB: 1:500-2000, IHC-P: 1:50-200

**Expiration Date** 12 months from date of receipt.



Western blot analysis of extracts of var...