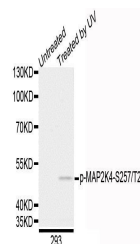


Product Datasheet

MAP2K4 (Phospho-S257/T261) antibody (orb374344)

Description	Rabbit polyclonal antibody to MAP2K4 (Phospho-S257/T261)
Reactivity	Human, Mouse, Rat
Conjugation	Unconjugated
Tested Applications	WB
Immunogen	A synthetic phosphorylated peptide around S257 & T261 of human MAP2K4(NP_003001.1).
Preservatives	PBS with 0.02% sodium azide, 50% glycerol, pH 7.3.
Storage	Maintain refrigerated at 2-8°C for up to 2 weeks. For long term storage store at -20°C in small aliquots to prevent freeze-thaw cycles.
Note	For research use only
Isotype	IgG
Clonality	Polyclonal
MW	44KDa
Uniprot ID	P45985
Dilution Range	WB: 1:500-2000
Expiration Date	12 months from date of receipt.



Western blot analysis of extracts of 293...