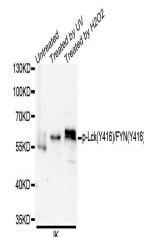


Product Datasheet

Lck (Phospho-Y416/FYN-Y416) antibody (orb374338)

| | |
|----------------------------|---|
| Description | Rabbit polyclonal antibody to Lck (Phospho-Y416/FYN-Y416) |
| Species/Host | Rabbit |
| Reactivity | Human |
| Conjugation | Unconjugated |
| Tested Applications | WB |
| Immunogen | A phospho specific peptide corresponding to residues surrounding Y416 of human SRC Family |
| Preservatives | Buffer: PBS with 0.02% sodium azide,50% glycerol,pH7.3. |
| Storage | Maintain refrigerated at 2-8°C for up to 2 weeks. For long term storage store at -20°C in small aliquots to prevent freeze-thaw cycles. |
| Note | For research use only |
| Isotype | IgG |
| Clonality | Polyclonal |
| Purity | Affinity purification |
| MW | 56KDa |
| Uniprot ID | P06241 |
| Entrez | 53430553932406 , 2 , 023 |
| Dilution Range | WB: 1:500-2000 |
| Expiration Date | 12 months from date of receipt. |



Western blot analysis of extracts of Jur...