

## Product Datasheet

### CEP164 antibody (orb374318)

**Description** Rabbit polyclonal antibody to CEP164

**Reactivity** Human, Mouse, Rat

**Conjugation** Unconjugated

**Tested Applications** IHC, WB

**Immunogen** Recombinant fusion protein of human CEP164(NP\_055771.4).

**Preservatives** PBS with 0.02% sodium azide,50% glycerol,pH7.3.

**Storage** Maintain refrigerated at 2-8°C for up to 2 weeks. For long term storage store at -20°C in small aliquots to prevent freeze-thaw cycles.

**Note** For research use only

**Isotype** IgG

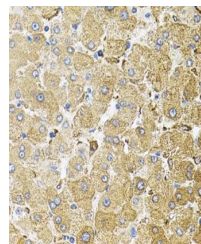
**Clonality** Polyclonal

**MW** 164kDa

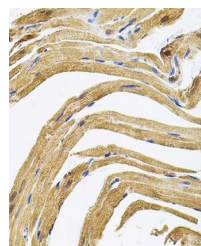
**Uniprot ID** **Q9UPVO**

**Dilution Range** WB: 1:500-2000, IHC-P: 1:50-200

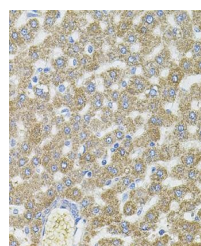
**Expiration Date** 12 months from date of receipt.



Immunohistochemical staining of mouse brain tissue.



Immunohistochemical staining of rat liver tissue.



Immunohistochemical staining of rat heart tissue.