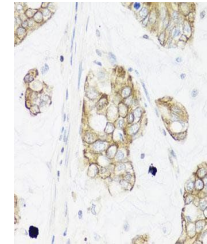


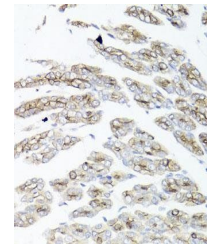
Product Datasheet

IER3 antibody (orb374199)

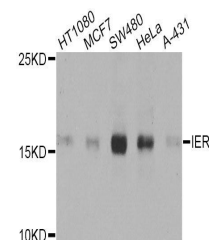
Description	Rabbit polyclonal antibody to IER3
Reactivity	Human, Mouse
Conjugation	Unconjugated
Tested Applications	IHC, WB
Immunogen	A synthetic peptide of human IER3(NP_003888.2).
Preservatives	PBS with 0.02% sodium azide,50% glycerol,pH7.3.
Storage	Maintain refrigerated at 2-8°C for up to 2 weeks. For long term storage store at -20°C in small aliquots to prevent freeze-thaw cycles.
Note	For research use only
Isotype	IgG
Clonality	Polyclonal
MW	17KDa
Uniprot ID	P46695
Dilution Range	WB: 1:500-2000, IHC-P: 1:50-100
Expiration Date	12 months from date of receipt.



Immunohistochemical staining of mouse st...



Immunohistochemical staining of human ga...



Western blot analysis of extracts of var...