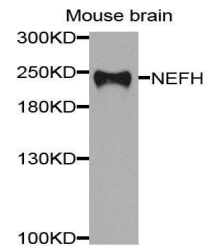


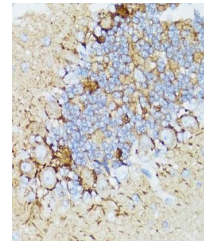
Product Datasheet

NEFH antibody (orb374131)

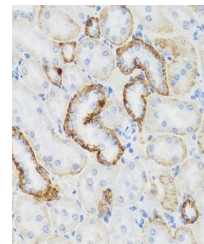
Description	Rabbit polyclonal antibody to NEFH
Reactivity	Human, Mouse, Rat
Conjugation	Unconjugated
Tested Applications	ICC, IF, IP, WB
Immunogen	Recombinant fusion protein of human Neurofilament H(NP_066554.2).
Preservatives	PBS with 0.01% thiomersal,50% glycerol,pH7.3.
Storage	Maintain refrigerated at 2-8°C for up to 2 weeks. For long term storage store at -20°C in small aliquots to prevent freeze-thaw cycles.
Note	For research use only
Isotype	IgG
Clonality	Polyclonal
MW	150KDa/220KDa
Uniprot ID	P12036
Dilution Range	WB: 1:500-2000, IHC-P: 1:50-100
Expiration Date	12 months from date of receipt.



Western blot analysis of extracts of mou...



Immunohistochemical staining of mouse ki...



Immunohistochemical staining of rat kidn...