

Product Datasheet

ANAPC10 antibody (orb374053)

Description Rabbit polyclonal antibody to ANAPC10

Reactivity Human, Mouse, Rat

Conjugation Unconjugated

Tested Applications WB

Immunogen Recombinant fusion protein of human ANAPC10(NP_055700.2).

Preservatives PBS with 0.02% sodium azide,50% glycerol,pH7.3.

Storage Maintain refrigerated at 2-8°C for up to 2 weeks. For long term storage store at -20°C in small aliquots to prevent freeze-thaw cycles.

Note For research use only

Isotype IgG

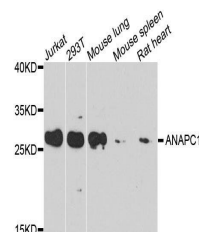
Clonality Polyclonal

MW 26kDa

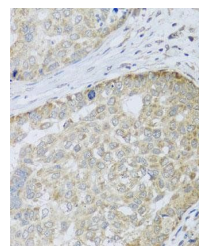
Uniprot ID [Q9UM13](#)

Dilution Range WB: 1:500-2000, IHC-P: 1:50-100

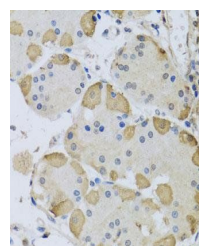
Expiration Date 12 months from date of receipt.



Western blot analysis of extracts of var...



Immunohistochemical staining of human st...



Immunohistochemical staining of human li...