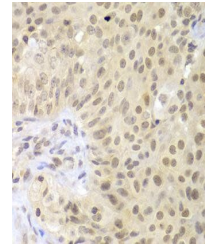


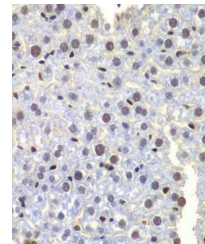
Product Datasheet

LHX4 antibody [Out of stock] (orb373942)

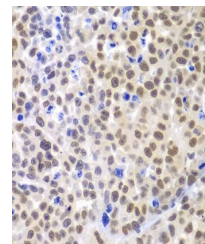
Description	Rabbit polyclonal antibody to LHX4
Reactivity	Human, Mouse, Rat
Conjugation	Unconjugated
Tested Applications	IHC, WB
Immunogen	Recombinant fusion protein of human LHX4(NP_203129.1).
Preservatives	PBS with 0.02% sodium azide,50% glycerol,pH7.3.
Storage	Maintain refrigerated at 2-8°C for up to 2 weeks. For long term storage store at -20°C in small aliquots to prevent freeze-thaw cycles.
Note	For research use only
Isotype	IgG
Clonality	Polyclonal
MW	43kDa
Uniprot ID	Q969G2
Dilution Range	WB: 1:500-2000, IHC-P: 1:50-200
Expiration Date	12 months from date of receipt.



Immunohistochemical staining of human co...



Immunohistochemical staining of human oo...



Immunohistochemical staining of human ki...