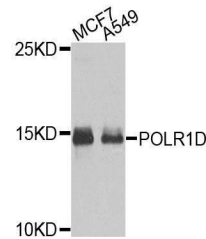


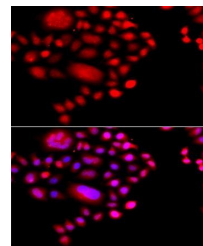
## Product Datasheet

### POLR1D antibody (orb373921)

|                            |   |
|----------------------------|---|
| <b>Description</b>         | Rabbit polyclonal antibody to POLR1D  |
| <b>Species/Host</b>        | Rabbit  |
| <b>Reactivity</b>          | Human   |
| <b>Conjugation</b>         | Unconjugated  |
| <b>Tested Applications</b> | WB  |
| <b>Immunogen</b>           | Recombinant fusion protein of human POLR1D (NP_057056.1).   |
| <b>Preservatives</b>       | Buffer: PBS with 0.02% sodium azide, 50% glycerol, pH7.3.   |
| <b>Storage</b>             | Maintain refrigerated at 2-8°C for up to 2 weeks. For long term storage store at -20°C in small aliquots to prevent freeze-thaw cycles. |
| <b>Note</b>                | For research use only   |
| <b>Isotype</b>             | IgG   |
| <b>Clonality</b>           | Polyclonal  |
| <b>Purity</b>              | Affinity purification   |
| <b>MW</b>                  | 15kDa   |
| <b>Uniprot ID</b>          | <a href="#">Q9Y2S0</a>  |
| <b>Entrez</b>              | <a href="#">51082</a>   |
| <b>Dilution Range</b>      | WB: 1:500-2000, IF/ICC: 1:50-100  |
| <b>Expiration Date</b>     | 12 months from date of receipt.   |



Western blot analysis of extracts of var...



Immunofluorescence analysis of A549 cell...