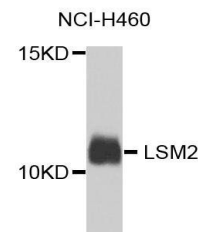


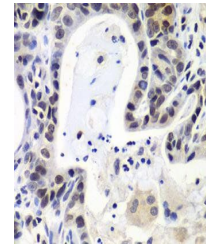
Product Datasheet

LSM2 antibody (orb373902)

Description	Rabbit polyclonal antibody to LSM2
Reactivity	Human
Conjugation	Unconjugated
Tested Applications	WB
Immunogen	Recombinant fusion protein of human LSM2(NP_067000.1).
Preservatives	PBS with 0.02% sodium azide,50% glycerol,pH7.3.
Storage	Maintain refrigerated at 2-8°C for up to 2 weeks. For long term storage store at -20°C in small aliquots to prevent freeze-thaw cycles.
Note	For research use only
Isotype	IgG
Clonality	Polyclonal
MW	13kDa
Uniprot ID	Q9Y333
Dilution Range	WB: 1:500-2000, IHC-P: 1:50-200
Expiration Date	12 months from date of receipt.



Western blot analysis of extracts of NCL...



Immunohistochemical staining of human ga...