

Product Datasheet

GTF2I antibody (orb373841)

Description Rabbit polyclonal antibody to GTF2I

Reactivity Human, Mouse, Rat

Conjugation Unconjugated

Tested Applications IHC, WB

Immunogen Recombinant fusion protein of human GTF2I(NP_001157108.1).

Preservatives PBS with 0.02% sodium azide,50% glycerol,pH7.3.

Storage Maintain refrigerated at 2-8°C for up to 2 weeks. For long term storage store at -20°C in small aliquots to prevent freeze-thaw cycles.

Note For research use only

Isotype IgG

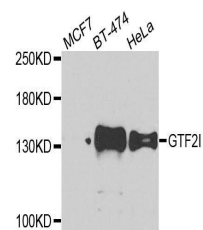
Clonality Polyclonal

MW 132kDa

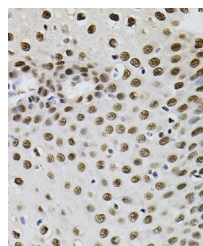
Uniprot ID [P78347](#)

Dilution Range WB: 1:500-2000, IHC-P: 1:100-200

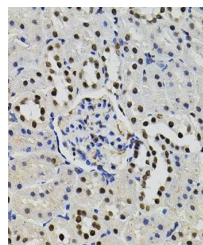
Expiration Date 12 months from date of receipt.



Western blot analysis of extracts of var...



Immunohistochemical staining of mouse li...



Immunohistochemical staining of rat brai...