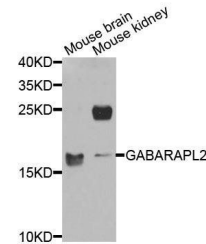


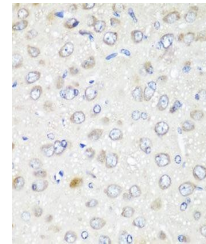
Product Datasheet

GABARAPL2 antibody (orb373762)

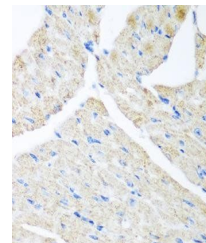
Description	Rabbit polyclonal antibody to GABARAPL2
Reactivity	Human, Mouse, Rat
Conjugation	Unconjugated
Tested Applications	IHC, WB
Immunogen	Recombinant fusion protein of human GABARAPL2(NP_009216.1).
Preservatives	PBS with 0.02% sodium azide,50% glycerol,pH7.3.
Storage	Maintain refrigerated at 2-8°C for up to 2 weeks. For long term storage store at -20°C in small aliquots to prevent freeze-thaw cycles.
Note	For research use only
Isotype	IgG
Clonality	Polyclonal
MW	14kDa
Uniprot ID	P60520
Dilution Range	WB: 1:500-2000, IHC-P: 1:50-200, IF/ICC: 1:20-50
Expiration Date	12 months from date of receipt.



Western blot analysis of extracts of var...



Immunohistochemical staining of rat brai...



Immunohistochemical staining of mouse he...