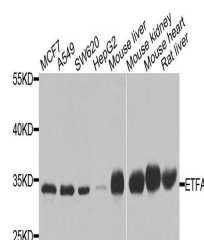


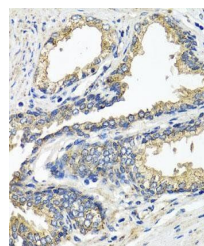
Product Datasheet

ETFA antibody (orb373683)

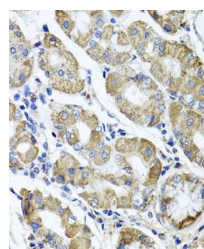
Description	Rabbit polyclonal antibody to ETFA
Reactivity	Human, Mouse, Rat
Conjugation	Unconjugated
Tested Applications	IHC, IP, WB
Immunogen	Recombinant fusion protein of human ETFA(NP_000117.1).
Preservatives	PBS with 0.02% sodium azide,50% glycerol,pH7.3.
Storage	Maintain refrigerated at 2-8°C for up to 2 weeks. For long term storage store at -20°C in small aliquots to prevent freeze-thaw cycles.
Note	For research use only
Isotype	IgG
Clonality	Polyclonal
MW	35kDa
Uniprot ID	P13804
Dilution Range	WB: 1:500-2000, IHC-P: 1:50-200, IF/ICC: 1:50-100
Expiration Date	12 months from date of receipt.



Western blot analysis of extracts of var...



Immunohistochemical staining of human pr...



Immunohistochemical staining of human ga...