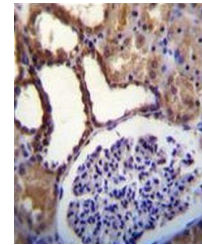
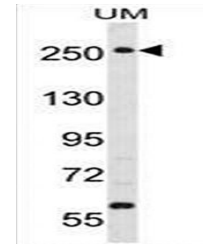


Product Datasheet

WNK3 antibody (orb37360)

Description	Rabbit polyclonal antibody to WNK3 is a member of the protein kinase super-family. It is a serine-th...
Species/Host	Rabbit
Reactivity	Human
Conjugation	Unconjugated
Tested Applications	IHC-P, WB
Immunogen	Synthetic Peptide
Target	WNK3
Form/Appearance	Purified polyclonal antibody supplied in PBS with 0.09% (W/V) sodium azide. This antibody is purified through a protein A column, followed by peptide affinity purification.
Storage	Maintain refrigerated at 2-8°C for up to 2 weeks. For long term storage store at -20°C in small aliquots to prevent freeze-thaw cycles
Note	For research use only
Isotype	Rabbit IgG
Clonality	Polyclonal
MW	198416
Uniprot ID	Q9BYP7
NCBI	NP_001002838.1 , NP_065973.2
Dilution Range	WB: 1:1000, IHC-P: 1:10-50
Expiration Date	12 months from date of receipt.



Immunohistochemical analysis of paraffin...