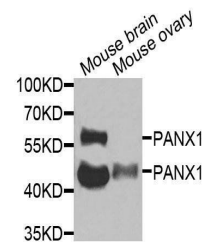


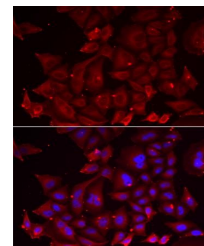
Product Datasheet

PANX1 antibody (orb373453)

Description	Rabbit polyclonal antibody to PANX1
Reactivity	Human, Mouse
Conjugation	Unconjugated
Tested Applications	WB
Immunogen	A synthetic peptide of human Pannexin 1(NP_056183.2).
Preservatives	PBS with 0.02% sodium azide,50% glycerol,pH7.3.
Storage	Maintain refrigerated at 2-8°C for up to 2 weeks. For long term storage store at -20°C in small aliquots to prevent freeze-thaw cycles.
Note	For research use only
Isotype	IgG
Clonality	Polyclonal
MW	54kDa
Uniprot ID	Q96RD7
Dilution Range	WB: 1:500-2000, IHC-P: 1:50-200, IF/ICC: 1:50-100
Expiration Date	12 months from date of receipt.



Western blot analysis of extracts of var...



Immunofluorescence analysis of U2OS cell...