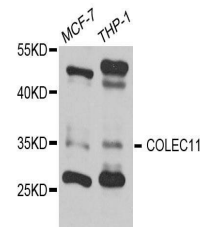


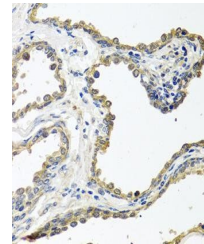
Product Datasheet

COLEC11 antibody (orb373269)

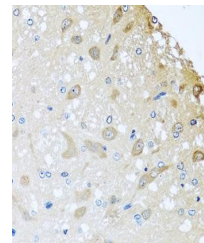
Description	Rabbit polyclonal antibody to COLEC11
Species/Host	Rabbit
Reactivity	Human, Mouse, Rat
Conjugation	Unconjugated
Tested Applications	IHC, WB
Immunogen	Recombinant fusion protein of human COLEC11 (NP_076932.1).
Preservatives	Buffer: PBS with 0.02% sodium azide, 50% glycerol, pH7.3.
Storage	Maintain refrigerated at 2-8°C for up to 2 weeks. For long term storage store at -20°C in small aliquots to prevent freeze-thaw cycles.
Note	For research use only
Isotype	IgG
Clonality	Polyclonal
Purity	Affinity purification
MW	35kDa
Uniprot ID	Q9BWP8
Entrez	78989
Dilution Range	WB: 1:200-2000, IHC-P: 1:50-100
Expiration Date	12 months from date of receipt.



Western blot analysis of extract of vari...



Immunohistochemical staining of rat brai...



Immunohistochemical staining of human pr...