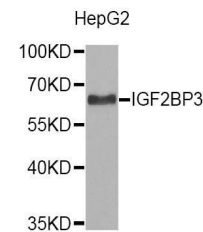


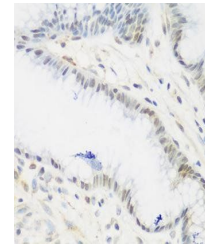
Product Datasheet

IGF2BP3 antibody (orb373231)

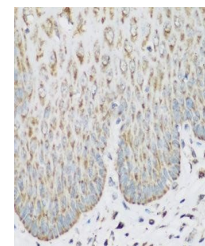
Description	Rabbit polyclonal antibody to IGF2BP3
Reactivity	Human, Mouse
Conjugation	Unconjugated
Tested Applications	ICC, IF, IHC, IP, WB
Immunogen	A synthetic peptide of human IGF2BP3(NP_006538.2).
Preservatives	PBS with 0.02% sodium azide,50% glycerol,pH7.3.
Storage	Maintain refrigerated at 2-8°C for up to 2 weeks. For long term storage store at -20°C in small aliquots to prevent freeze-thaw cycles.
Note	For research use only
Isotype	IgG
Clonality	Polyclonal
MW	70kDa
Uniprot ID	000425
Dilution Range	WB: 1:500-2000, IHC-P: 1:20-200, IF/ICC: 1:10-100, IP: 1:20-50
Expiration Date	12 months from date of receipt.



Western blot analysis of extracts of Hep...



Immunohistochemical staining of human es...



Immunohistochemical staining of human ga...