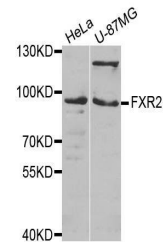


Product Datasheet

FXR2 antibody (orb373212)

Description	Rabbit polyclonal antibody to FXR2
Species/Host	Rabbit
Reactivity	Human, Mouse, Rat
Conjugation	Unconjugated
Tested Applications	ELISA, IF, WB
Immunogen	A synthetic peptide corresponding to a sequence within amino acids 550-650 of human FXR2 (NP_004851.2).
Preservatives	PBS with 0.02% sodium azide, 50% glycerol, pH 7.3.
Storage	Maintain refrigerated at 2-8°C for up to 2 weeks. For long term storage store at -20°C in small aliquots to prevent freeze-thaw cycles.
Note	For research use only
Isotype	IgG
Clonality	Polyclonal
MW	104kDa
Uniprot ID	P51116
Dilution Range	WB: 1:500-2000
Expiration Date	12 months from date of receipt.



Western blot analysis of extracts of var...