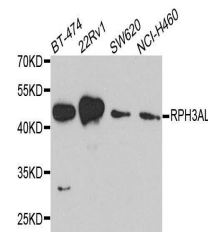


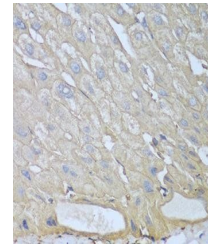
Product Datasheet

RPH3AL antibody (orb373210)

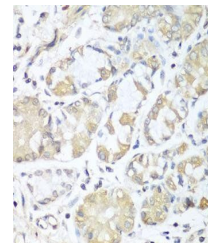
Description	Rabbit polyclonal antibody to RPH3AL
Reactivity	Human, Mouse
Conjugation	Unconjugated
Tested Applications	ICC, IF, WB
Immunogen	Recombinant fusion protein of human RPH3AL(NP_008918.1).
Preservatives	PBS with 0.02% sodium azide,50% glycerol,pH7.3.
Storage	Maintain refrigerated at 2-8°C for up to 2 weeks. For long term storage store at -20°C in small aliquots to prevent freeze-thaw cycles.
Note	For research use only
Isotype	IgG
Clonality	Polyclonal
MW	45kDa
Uniprot ID	Q9UNE2
Dilution Range	WB: 1:500-2000, IHC-P: 1:50-100
Expiration Date	12 months from date of receipt.



Western blot analysis of extract of vari...



Immunohistochemical staining of human li...



Immunohistochemical staining of human st...