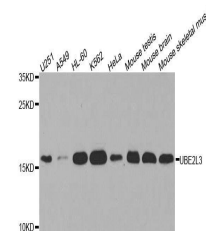


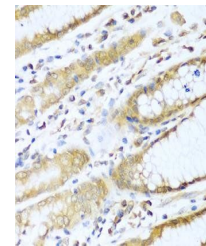
Product Datasheet

UBE2L3 antibody (orb373197)

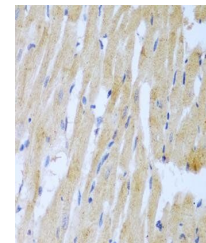
Description	Rabbit polyclonal antibody to UBE2L3
Reactivity	Human, Mouse, Rat
Conjugation	Unconjugated
Tested Applications	ICC, IF, IHC, WB
Immunogen	Recombinant fusion protein of human UBE2L3(NP_001243284.1).
Preservatives	PBS with 0.02% sodium azide,50% glycerol,pH7.3.
Storage	Maintain refrigerated at 2-8°C for up to 2 weeks. For long term storage store at -20°C in small aliquots to prevent freeze-thaw cycles.
Note	For research use only
Isotype	IgG
Clonality	Polyclonal
MW	18kDa
Uniprot ID	P68036
Dilution Range	WB: 1:1000-2000, IHC-P: 1:50-100
Expiration Date	12 months from date of receipt.



Western blot analysis of extracts of var...



Immunohistochemical staining of rat hear...



Immunohistochemical staining of human st...