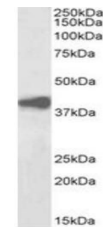


## Product Datasheet

### ADH1A, B, C antibody (Biotin) (orb372986)

<b>Description</b>	Goat polyclonal antibody against ADH1A, B, C conjugated to Biotin
<b>Species/Host</b>	Goat
<b>Reactivity</b>	Human, Mouse, Rat
<b>Conjugation</b>	Unconjugated
<b>Tested Applications</b>	ELISA, IHC, WB
<b>Target</b>	pan ADH, Biotinylated
<b>Preservatives</b>	Supplied at 0.5 mg/ml in Tris saline, 0.02% sodium azide, pH 7.3 with 0.5% bovine serum albumin. Aliquot and store at -20°C. Minimize freezing and thawing.
<b>Storage</b>	Aliquot and store at -20°C. Minimize freezing and thawing.
<b>Note</b>	For research use only
<b>Application notes</b>	WB: Approx 39kDa band observed in Human Liver lysates (calculated MW of 39.9kDa according to NP_000658.1). See non-biotinylated parental product's datasheet for further QC data. Recommended concentration: 1-3µg/ml.
<b>Protein Sequence</b>	STAGKVMKCKA.
<b>Clonality</b>	Polyclonal
<b>MW</b>	39.9
<b>Entrez</b>	<a href="#">124</a> , <a href="#">125</a> , <a href="#">126</a>
<b>Dilution Range</b>	ELISA: 1:8000, WB: 1-3 µg/ml
<b>Expiration Date</b>	12 months from date of receipt.



Western blot analysis of Human Liver lys...