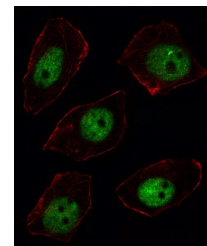
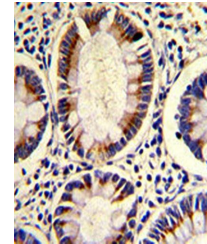


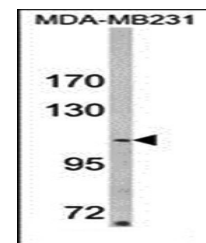
Product Datasheet

ARGBP2 antibody (orb37267)

Description	Purified rabbit polyclonal antibody.
Species/Host	Rabbit
Reactivity	Human
Conjugation	Unconjugated
Tested Applications	FC, IF, IHC-P, WB
Immunogen	Synthetic Peptide
Target	SORBS2
Form/Appearance	Purified polyclonal antibody supplied in PBS with 0.09% (W/V) sodium azide. This antibody is prepared by Saturated Ammonium Sulfate (SAS) precipitation followed by dialysis against PBS.
Storage	Maintain refrigerated at 2-8°C for up to 2 weeks. For long term storage store at -20°C in small aliquots to prevent freeze-thaw cycles
Note	For research use only
Isotype	Rabbit IgG
Clonality	Polyclonal
MW	124108
Uniprot ID	O94875
NCBI	NP_001139142.1 , NP_001139143.1 , NP_001139144.1 , NP_001139146.1 , NP_001139145.1 , NP_003594.3 , NP_066547.1 , NP_001257700.1
Dilution Range	IF/ICC: 1:10-50, WB: 1:1000, IHC-P: 1:10-50, FACS: 1:10-50
Expiration Date	12 months from date of receipt.



Immunofluorescence analysis of U251 cell...



Western blot analysis of ARGBP2 antibody...