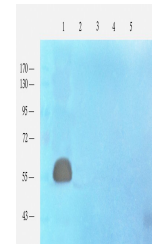


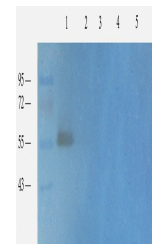
Product Datasheet

beta Endorphin antibody (orb372332)

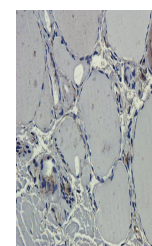
Description	beta Endorphin antibody
Species/Host	Rabbit
Reactivity	Human, Mouse, Rat
Conjugation	Unconjugated
Tested Applications	ICC, IF, IHC-P, WB
Immunogen	KLH conjugated synthetic peptide derived from human beta Endorphin. Please contact us for the exact immunogen sequence. The peptide is available as orb374987.
Target	beta Endorphin
Form/Appearance	10 mM PBS, 0.02% sodium azide
Concentration	- 100 µg (in 200 µl): 0.5 mg/ml- 200 µg (in 400 µl): 0.5 mg/ml
Storage	Maintain refrigerated at 2-8°C for up to 2 weeks. For long term storage store at -20°C in small aliquots to prevent freeze-thaw cycles.
Note	For research use only
Isotype	IgG
Clonality	Polyclonal
Purity	Polyclonal antibodies are purified by peptide affinity chromatography
MW	29 kDa
Uniprot ID	P01189 , P01194
Entrez	5443
Dilution Range	WB: 1:200-1000, IHC-P: 1:100-600, IF/ICC: 1:100-600
Expiration Date	12 months from date of receipt.



WB analysis of mouse brain (lane 1), mos...



Western blot analysis of mouse brain (la...



IHC-P image of human thyroid tumour tiss...