
Product Datasheet

Muc2 antibody (orb372331)

Description

Muc2 antibody

Species/Host

Rabbit

Reactivity

Human, Mouse, Porcine, Rat

Conjugation

Unconjugated

Tested Applications

ICC, IF, IHC-P

Applications
Immunogen

KLH conjugated synthetic peptide derived from human Muc2. Please contact us for the exact immunogen sequence. The peptide is available as orb374990.

Target

Muc2

Form/Appearance

10 mM PBS, 0.02% sodium azide

Concentration

- 100 µg (in 200 µl): 0.5 mg/ml- 200 µg (in 400 µl): 0.5 mg/ml

Storage

Store at 4°C for up to two weeks. For long term storage, aliquot and store at -20°C, avoid freeze/thaw cycles.

Note

For research use only

Isotype

IgG

Clonality

Polyclonal

Purity

Polyclonal antibodies are purified by peptide affinity chromatography

MW

540 kDa

Uniprot ID

[Q62635](#), [Q02817](#), [Q80Z19](#)

NCBI

[002457](#), [002448](#)

Entrez

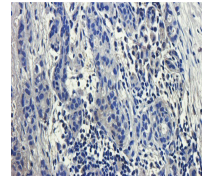
[4583](#)

Dilution Range

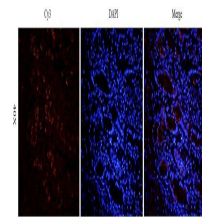
IHC-P: 1:100-500, IF/ICC: 1:100-500

Expiration Date

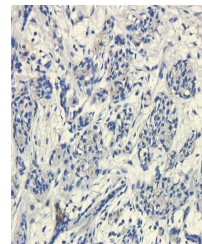
12 months from date of receipt.



IHC-P image of human breast cancer tissue...



Immunofluorescence analysis of pig small...



Immunohistochemical staining of paraffin...