
Product Datasheet

MT-ATP8 antibody (orb371963)

Description

MT-ATP8 antibody

Species/Host

Rabbit

Reactivity

Human, Mouse, Rat

Conjugation

Unconjugated

Tested Applications

IHC-P, WB

Immunogen

KLH conjugated synthetic peptide derived from human MT-ATP8. Please contact us for the exact immunogen sequence. The peptide is available as orb374985.

Target

MT-ATP8

Form/Appearance

10 mM PBS, 0.02% sodium azide

Concentration

- 100 µg (in 200 µl): 0.5 mg/ml- 200 µg (in 400 µl): 0.5 mg/ml

Storage

Store at 4°C for up to two weeks. For long term storage, aliquot and store at -20°C, avoid freeze/thaw cycles.

Note

For research use only

Isotype

IgG

Clonality

Polyclonal

Purity

Polyclonal antibodies are purified by peptide affinity chromatography

MW

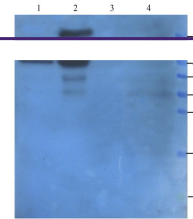
8 kDa

Uniprot ID
[P11608](#), [P03928](#), [P03930](#)
Entrez
[4509](#)
Dilution Range

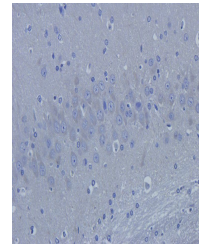
WB: 1:100-1000, IHC-P: 1:500-200 (based on 0.5 mg/ml)

Expiration Date

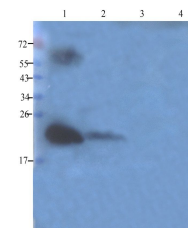
12 months from date of receipt.



Western blot analysis of MT-ATP8 antibody...



293t cells (lane 4) using MT-ATP8 antibody...



Immunohistochemical staining of paraffin...