

---

## Product Datasheet

### TNF alpha antibody (orb371962)

**Description**

TNF alpha antibody

**Species/Host**

Rabbit

**Reactivity**

Human, Mouse, Rat

**Conjugation**

Unconjugated

**Tested Applications**

ICC, IF, IHC-P

**Immunogen**

KLH conjugated synthetic peptide derived from human TNF alpha. Please contact us for the exact immunogen sequence. The peptide is available as orb374984.

**Target**

TNF alpha

**Form/Appearance**

10 mM PBS, 0.02% sodium azide

**Concentration**

- 100 µg (in 200 µl): 0.5 mg/ml- 200 µg (in 400 µl): 0.5 mg/ml

**Storage**

Store at 4°C for up to two weeks. For long term storage, aliquot and store at -20°C, avoid freeze/thaw cycles.

**Note**

For research use only

**Isotype**

IgG

**Clonality**

Polyclonal

**Purity**

Polyclonal antibodies are purified by peptide affinity chromatography

**MW**

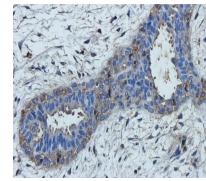
27 kDa

**Uniprot ID**
[P06804](#), [P16599](#), [P01375](#)
**NCBI**
[000594](#), [000585](#)
**Entrez**
[7124](#)
**Dilution Range**

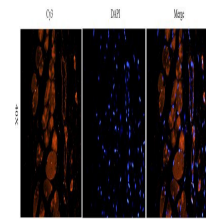
IF/ICC: 1:100-800, WB: 1:100-2000, IHC-P: 1:100-800 (based on 0.5 mg/ml)

**Expiration Date**

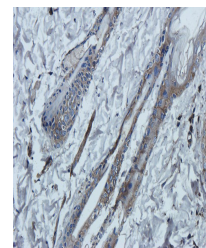
12 months from date of receipt.



IHC-P image of human breast tumour using...



Immunofluorescence analysis of rat skin ...



Immunohistochemical staining of rat skin...