
Product Datasheet

TLR4 antibody (orb371961)

Description

TLR4 antibody

Species/Host

Rabbit

Reactivity

Human, Mouse, Porcine, Rat

Conjugation

Unconjugated

Tested Applications

ICC, IF, IHC-P

Immunogen

KLH conjugated synthetic peptide derived from human TLR4. Please contact us for the exact immunogen sequence. The peptide is available as orb374983.

Target

TLR4

Form/Appearance

10 mM PBS, 0.02% sodium azide

Concentration

- 100 µg (in 200 µl): 0.5 mg/ml- 200 µg (in 400 µl): 0.5 mg/ml

Storage

Store at 4°C for up to two weeks. For long term storage, aliquot and store at -20°C, avoid freeze/thaw cycles.

Note

For research use only

Isotype

IgG

Clonality

Polyclonal

Purity

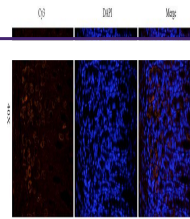
Polyclonal antibodies are purified by peptide affinity chromatography

Uniprot ID
[O00206](#), [Q9QUK6](#), [Q9QX05](#)
NCBI
[11](#), [31](#), [003266](#), [003257](#)
Entrez
[7099](#)
Dilution Range

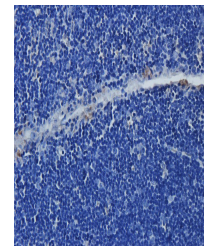
IF/ICC: 1:100-600, IHC-P: 1:100-600 (based on 0.5 mg/ml)

Expiration Date

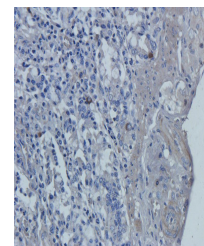
12 months from date of receipt.



Immunofluorescence analysis of rat stoma...



Immunohistochemical staining of paraffin...



Immunohistochemical staining of pig smal...