
Product Datasheet

TGF beta Receptor 2 antibody (orb371959)

Description

TGF beta Receptor 2 antibody

Species/Host

Rabbit

Reactivity

Human, Mouse, Rat

Conjugation

Unconjugated

Tested Applications

ICC, IF, IHC-P, WB

Immunogen

KLH conjugated synthetic peptide derived from human TGF beta Receptor 2. Please contact us for the exact immunogen sequence. The peptide is available as orb374981.

Target

TGF beta Receptor 2

Form/Appearance

10 mM PBS, 0.02% sodium azide

Concentration

- 100 µg (in 200 µl): 0.5 mg/ml- 200 µg (in 400 µl): 0.5 mg/ml

Storage

Store at 4°C for up to two weeks. For long term storage, aliquot and store at -20°C, avoid freeze/thaw cycles.

Note

For research use only

Isotype

IgG

Clonality

Polyclonal

Purity

Polyclonal antibodies are purified by peptide affinity chromatography

MW

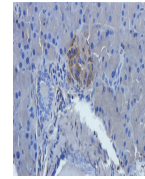
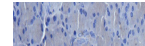
56 kDa

Uniprot ID
[P38438](#), [P37173](#), [Q62312](#)
Entrez
[7048](#)
Dilution Range

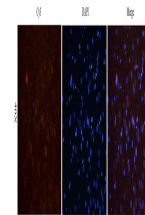
IHC-P: 1:100-500, WB: 1:100-1000, IF/ICC: 1:100-500 (based on 0.5 mg/ml)

Expiration Date

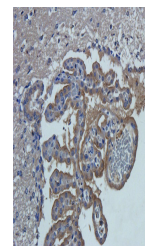
12 months from date of receipt.



IHC-P staining of rat pancreas tissue us...



IF analysis of rat brain tissue using TG...



IHC-P image of rat brain tissue using an...