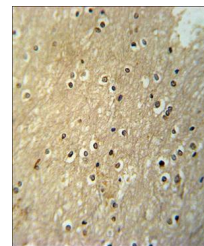
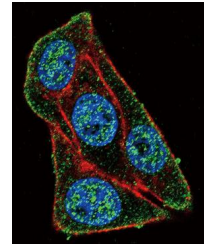


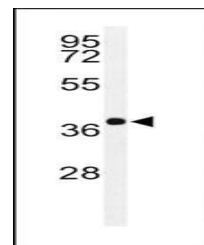
Product Datasheet

PAX6-T373 antibody (orb37191)

Description	Peptide affinity purified rabbit polyclonal antibody.
Species/Host	Rabbit
Reactivity	Human, Rat
Conjugation	Unconjugated
Tested Applications	IF, IHC-P, WB
Immunogen	Synthetic Peptide
Target	PAX6
Form/Appearance	Purified polyclonal antibody supplied in PBS with 0.09% (W/V) sodium azide. This antibody is purified through a protein A column, followed by peptide affinity purification.
Storage	Maintain refrigerated at 2-8°C for up to 2 weeks. For long term storage store at -20°C in small aliquots to prevent freeze-thaw cycles
Note	For research use only
Isotype	Rabbit IgG
Clonality	Polyclonal
MW	46683
Uniprot ID	P26367
NCBI	NP_000271.1 , NP_001245393.1 , NP_001121084.1 , NP_001245394.1 , NP_001595.2
Dilution Range	WB: 1:1000, IHC-P: 1:10-50, IF/ICC: 1:10-50
Expiration Date	12 months from date of receipt.



Immunohistochemical staining of paraffin...



Western blot analysis of in Y79 cell lin...