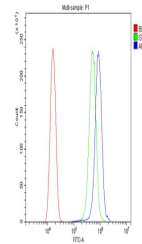


Product Datasheet

ARF6 Antibody (orb371721)

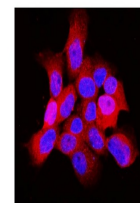
Description	ARF6 Antibody
Species/Host	Rabbit
Reactivity	Human, Mouse, Rat
Conjugation	Unconjugated
Tested Applications	FC, ICC, IF, IHC, WB
Immunogen	E.coli-derived human ARF6 recombinant protein (Position: G2-S175). Human ARF6 shares 100% amino acid (aa) sequence identity with both mouse and rat ARF6.
Form/Appearance	Lyophilized
Concentration	Adding 0.2 ml of distilled water will yield a concentration of 500 µg/ml.
Storage	Store at -20°C for one year from date of receipt. After reconstitution, at 4°C for one month. It can also be aliquotted and stored frozen at -20°C for six months. Avoid repeated freeze-thaw cycles.
Note	For research use only
Application notes	Tested Species: In-house tested species with positive results. Other applications have not been tested. Optimal dilutions should be determined by end users. . Add 0.2ml of distilled water will yield a concentration of 500ug/ml.
Isotype	Rabbit IgG
Clonality	Polyclonal
MW	20082 MW
Uniprot ID	P62330
Expiration Date	12 months from date of receipt.



Flow Cytometry analysis of SiHa cells us...



WB analysis of ARF6 using anti-ARF6 anti...



IF analysis of ARF6 using anti-ARF6 anti...