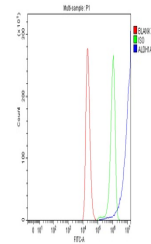


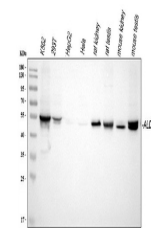
Product Datasheet

ALDH1A2 Antibody (orb371715)

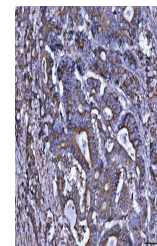
Description	ALDH1A2 Antibody
Species/Host	Rabbit
Reactivity	Human, Mouse, Rat
Conjugation	Unconjugated
Tested Applications	FC, IHC, WB
Immunogen	E.coli-derived human ALDH1A2 recombinant protein (Position: M1-A110). Human ALDH1A2 shares 95.5% amino acid (aa) sequence identity with both mouse and rat ALDH1A2.
Form/Appearance	Lyophilized
Concentration	Adding 0.2 ml of distilled water will yield a concentration of 500 µg/ml.
Storage	Store at -20°C for one year from date of receipt. After reconstitution, at 4°C for one month. It can also be aliquotted and stored frozen at -20°C for six months. Avoid repeated freeze-thaw cycles.
Note	For research use only
Application notes	Tested Species: In-house tested species with positive results. Predicted Species: Species predicted to be fit for the product based on sequence similarities. Other applications have not been tested. Optimal dilutions should be determined by end users. . Add 0.2ml of distilled water will yield a concentration of 500ug/ml.
Isotype	Rabbit IgG
Clonality	Polyclonal
MW	56724 MW
Uniprot ID	094788
Expiration Date	12 months from date of receipt.



Flow Cytometry analysis of 293T cells us...



WB analysis of ALDH1A2 using anti-ALDH1A...



IHC analysis of ALDH1A2 using anti-ALDH1...