

---

## Product Datasheet

### CRM1/XPO1 Antibody (orb371700)

**Description**

CRM1/XPO1 Antibody

**Species/Host**

Rabbit

**Reactivity**

Human, Mouse, Rat

**Conjugation**

Unconjugated

**Tested Applications**

FC, ICC, IF, IHC, IHC-Fr, WB

**Immunogen**

E.coli-derived human CRM1 recombinant protein (Position: N966-D1071). Human CRM1 shares 93.4% and 91.5% amino acid (aa) sequence identity with mouse and rat CRM1, respectively.

**Form/Appearance**

Lyophilized

**Concentration**

Adding 0.2 ml of distilled water will yield a concentration of 500 µg/ml.

**Storage**

Store at -20°C for one year from date of receipt. After reconstitution, at 4°C for one month. It can also be aliquotted and stored frozen at -20°C for six months. Avoid repeated freeze-thaw cycles.

**Note**

For research use only

**Application notes**

Tested Species: In-house tested species with positive results. By Heat: Boiling the paraffin sections in 10mM citrate buffer, pH6.0, for 20mins is required for the staining of formalin/paraffin sections. Other applications have not been tested. Optimal dilutions should be determined by end users. Add 0.2ml of distilled water will yield a concentration of 500µg/ml.

**Isotype**

Rabbit IgG

**Clonality**

Polyclonal

**MW**

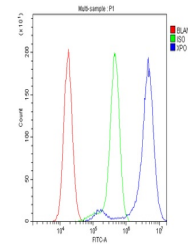
123386 MW

**Uniprot ID**
[O14980](https://www.uniprot.org/entry/O14980)
**Expiration Date**

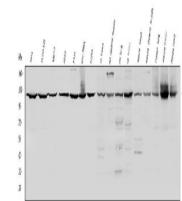
12 months from date of receipt.



Flow Cytometry analysis of SiHa cells us...



Flow Cytometry analysis of U87 cells usi...



WB:HeLa;COLO-320;MCF-7;A549;A431;SGC-790...