

Product Datasheet

WNK1 Antibody (orb371698)

Description

WNK1 Antibody


Species/Host

Rabbit

Reactivity

Human, Mouse, Rat

Conjugation

Unconjugated

Tested

IHC, WB

Applications

WB analysis of WNK1 using anti-WNK1 anti...

Immunogen

A synthetic peptide corresponding to a sequence in the middle region of human WNK1 (1154-1195aa DNPEEIATIMVNNDFILAIERESFVDQVREIIEKADEMLSED), different from the related mouse and rat sequences by one amino acid.

Form/Appearance

Lyophilized

Concentration

Adding 0.2 ml of distilled water will yield a concentration of 500 µg/ml.

Storage

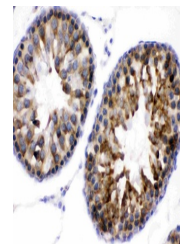
Store at -20°C for one year from date of receipt. After reconstitution, at 4°C for one month. It can also be aliquotted and stored frozen at -20°C for six months. Avoid repeated freeze-thaw cycles.

Note

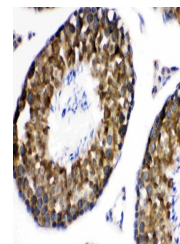
For research use only

Application notes

Tested Species: In-house tested species with positive results. Predicted Species: Species predicted to be fit for the product based on sequence similarities. By Heat: Boiling the paraffin sections in 10mM citrate buffer, pH6.0, for 20mins is required for the staining of formalin/paraffin sections. Other applications have not been tested. Optimal dilutions should be determined by end users. Add 0.2ml of distilled water will yield a concentration of 500ug/ml.



IHC analysis of WNK1 using anti-WNK1 ant...



IHC analysis of WNK1 using anti-WNK1 ant...

Isotype

Rabbit IgG

Clonality

Polyclonal

MW

250794 MW

Uniprot ID
[Q9H4A3](#)
Expiration Date

12 months from date of receipt.