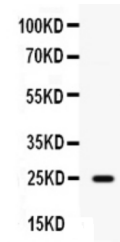


Product Datasheet

HE4/WFDC2 Antibody (orb371697)

| | |
|----------------------------|-------------------------------------------------------------------------------------------------------------------------------------------------------------------------------------------------------------------------------------|
| Description | HE4/WFDC2 Antibody |
| Species/Host | Rabbit |
| Reactivity | Human |
| Conjugation | Unconjugated |
| Tested Applications | ELISA, WB |
| Immunogen | E. coli-derived human HE4 recombinant protein (Position: E31-F124). Human HE4 shares 40.4% and 68% amino acid (aa) sequence identity with mouse and rat HE4, respectively. |
| Form/Appearance | Lyophilized |
| Concentration | Adding 0.2 ml of distilled water will yield a concentration of 500 µg/ml. |
| Storage | Store at -20°C for one year from date of receipt. After reconstitution, at 4°C for one month. It can also be aliquotted and stored frozen at -20°C for six months. Avoid repeated freeze-thaw cycles. |
| Note | For research use only |
| Application notes | Tested Species: In-house tested species with positive results. Other applications have not been tested. Optimal dilutions should be determined by end users. . Add 0.2ml of distilled water will yield a concentration of 500ug/ml. |
| Isotype | Rabbit IgG |
| Clonality | Polyclonal |
| MW | 12993 MW |
| Uniprot ID | Q14508 |
| Expiration Date | 12 months from date of receipt. |



Western blot analysis of HE4 expression ...