
Product Datasheet

Glucose Transporter 5 GLUT5/SLC2A5 Antibody (orb371694)

Description

Glucose Transporter 5 GLUT5/SLC2A5 Antibody

Species/Host

Rabbit

Reactivity

Human, Rat

Conjugation

Unconjugated

Tested Applications

FC, ICC, IF, IHC, IHC-Fr, WB

Immunogen

A synthetic peptide corresponding to a sequence in the middle region of human SLC2A5 (223-259aa QKKDEAAAKKALQTLRGWDSVDREVAEIRQEDEAEKA), different from the related mouse and rat sequences by nine amino acids.

Form/Appearance

Lyophilized

Concentration

Adding 0.2 ml of distilled water will yield a concentration of 500 µg/ml.

Storage

Store at -20°C for one year from date of receipt. After reconstitution, at 4°C for one month. It can also be aliquotted and stored frozen at -20°C for six months. Avoid repeated freeze-thaw cycles.

Note

For research use only

Application notes

Tested Species: In-house tested species with positive results. By Heat: Boiling the paraffin sections in 10mM citrate buffer, pH6.0, for 20mins is required for the staining of formalin/paraffin sections. Other applications have not been tested. Optimal dilutions should be determined by end users. . Add 0.2ml of distilled water will yield a concentration of 500ug/ml.

Isotype

Rabbit IgG

Clonality

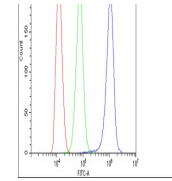
Polyclonal

MW

54974 MW

Uniprot ID
[P22732](#)
Expiration Date

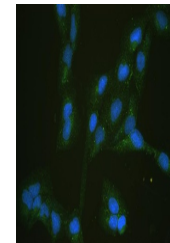
12 months from date of receipt.



Flow Cytometry analysis of THP-1 cells u...



WB analysis of SLC2A5 using anti-SLC2A5 ...



IF analysis of SLC2A5 using anti-SLC2A5 ...