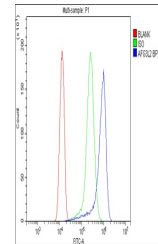


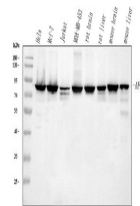
Product Datasheet

AFG3L2 Antibody (orb371649)

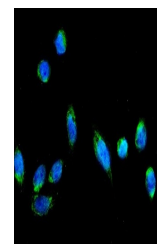
Description	AFG3L2 Antibody
Species/Host	Rabbit
Reactivity	Human, Mouse, Rat
Conjugation	Unconjugated
Tested Applications	FC, ICC, IF, WB
Immunogen	E. coli-derived human AFG3L2 recombinant protein (Position: R168-D250). Human AFG3L2 shares 100% amino acid (aa) sequence identity with mouse AFG3L2.
Form/Appearance	Lyophilized
Concentration	Adding 0.2 ml of distilled water will yield a concentration of 500 µg/ml.
Storage	Store at -20°C for one year from date of receipt. After reconstitution, at 4°C for one month. It can also be aliquotted and stored frozen at -20°C for six months. Avoid repeated freeze-thaw cycles.
Note	For research use only
Application notes	Tested Species: In-house tested species with positive results. Other applications have not been tested. Optimal dilutions should be determined by end users. . Add 0.2ml of distilled water will yield a concentration of 500ug/ml.
Isotype	Rabbit IgG
Clonality	Polyclonal
MW	88584 MW
Uniprot ID	Q9Y4W6
Sensitivity	> 5000 cells
Expiration Date	12 months from date of receipt.



Flow Cytometry analysis of A431 cells us...



WB analysis of AFG3L2 using anti-AFG3L2 ...



IF analysis of AFG3L2 using anti-AFG3L2 ...